



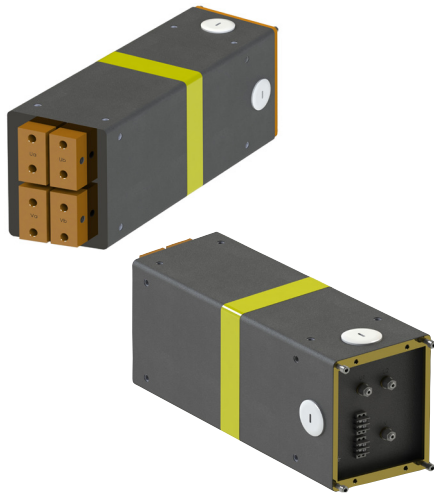
TRANSFORMADORES

Para soldadura por resistencia

• 50 Hz CA • 1000 Hz MF • 10 kHz MF

CA - Máquinas de Soldadura

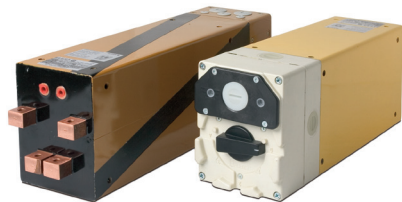
Normas Serra • 50 Hz



Referencia	kVA S _n (50%)	kA I _{2n} (50%)	V V _{2SEC} (U20)	Dimensiones (mm)	Peso (Kg)
TS-7	7	2,1	3,3	120 x 235 x 431	42
TS-16/12	16	4,4	2,7 / 3,6	120 x 235 x 431	45
TS-25/12	25	5,0	4,0 / 5,0	120 x 235 x 431	50
TS-50/12	50	8,0	5,4 / 6,3	120 x 235 x 506	58
TS-70/52	70	10,0	5,8 / 7,0	184 x 235 x 479	60
TS-100/52	100	11,1	7,7 / 9,0	184 x 235 x 564	110
TS-100/62	135	15,0	7,7 / 9,0	184 x 240 x 638	145
TS-125/52	125	11,5	8,6 / 11,0	184 x 235 x 638	140
TS-125/62	165	15,0	8,6 / 11,0	184 x 240 x 638	150
TS-200/5	200	19,0	7,5 / 10,5	312 x 337 x 485	210
TS-250/5	250	20,5	8,3 / 12,2	312 x 337 x 515	245
TS-300/5	300	22,8	9,3 / 13,5	312 x 337 x 550	255
TS-400/6	400	29,4	9,0/13,6	312 x 337 x 640	325

CA - Máquinas de Soldadura

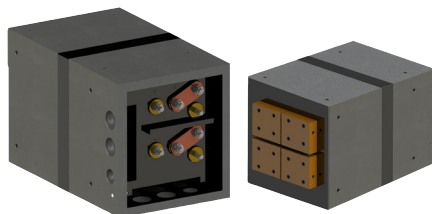
Normas DIN • 50 Hz



Referencia	kVA S _n (50%)	kA I _{2n} (50%)	V V _{2SEC} (U20)	Dimensiones (mm)	Peso (Kg)
DIN-40	40	8,0	3,6 / 5,0	184 x 235 x 400	68
DIN-63	63	8,9	5,0 / 7,1	184 x 235 x 450	84
DIN-100	100	10,0	7,1 / 10,0	184 x 235 x 560	113
DIN-125	125	11,3	8,0/11,1	184 x 235 x 610	125
DIN-150	150	11,5	10,0/13,1	184 x 235 x 670	140

CA - Roldanas

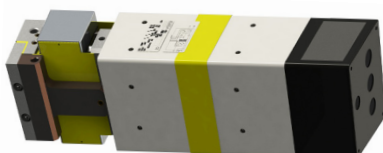
50 Hz



Referencia	kVA S _n (50%)	kA I _{2n} (50%)	V V _{2SEC} (U20)	Dimensiones (mm)	Peso (Kg)
TS-130/8	130	17,8	5,5 / 7,5	184 x 235 x 638	130
TS-160/8	160	19,5	6,2 / 7,7	312 x 337 x 455	140
TS-200/8	200	22,6	6,9 / 8,5	312 x 337 x 485	225
TS-250/8	250	26,3	7,6 / 9,6	312 x 337 x 515	265
TS-300/8	300	30,0	8,3 / 10,0	312 x 337 x 550	275

MF - Máquinas de Soldadura

1000 Hz



Referencia	kVA S _n (50%)	kA I _{2p} (100%)	V V _{2SEC} (U20)	Dimensiones (mm)	Peso (Kg)
TSE-MF-20	20	5,0	4,0	106 x 150 x 416	18,5
TSE-MF-40	40	5,0	5,1	106 x 150 x 416	19,0
TSE-MF-100	100	6,5	10,0	125 x 160 x 433	22,5
TSE-MF-150	150	6,5	12,0	125 x 160 x 456	26,8
TSE-MF-170	170	12,0	10,0	125 x 160 x 537	38,0
TSE-MF-200	200	12,0	12,0	125 x 160 x 552	38,5

TRANSFORMADORES

Para soldadura por resistencia

AC - Pinzas Manuales

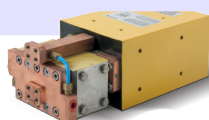
50 Hz



Referencia	kVA Sn (50%)	kA I _{2p} (100%)	V ⁻ V _{ZSEC} (U20)	Dimensiones (mm)	Peso (Kg)
TSPM-23	23	3,4	4,8	125 x 160 x 298	20,0
TSPM-45	45	4,5	7,1	125 x 160 x 328	29,0
TSPM-65	65	5,4	8,5	125 x 160 x 364	31,0
TSPM-76	76	5,4	10,0	125 x 160 x 430	39,5

MF - Pinzas Manuales

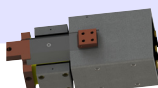
1.000 Hz



Referencia	kVA Sn (50%)	kA I _{2p} (100%)	V V _{ZSEC} (U20)	Dimensiones (mm)	Peso (Kg)
TSPM-60MF	60	4,4	8,0	125 x 160 x 367	20
TSPM-100MF	100	6,5	10,0	125 x 160 x 377	22

MF - Pinzas Manuales

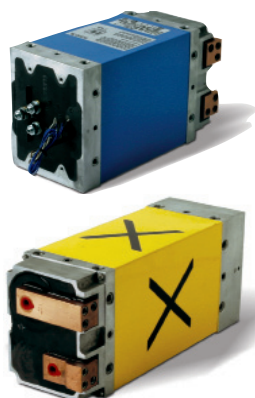
10.000 Hz



Referencia	kVA Sn (50%)	kA I _{2p} (100%)	V V _{ZSEC} (U20)	Dimensiones (mm)	Peso (Kg)
TSPM-60/10kHz	60	5,0	11,0	92 x 115 x 273	8,6

CA - Pinzas de Robot

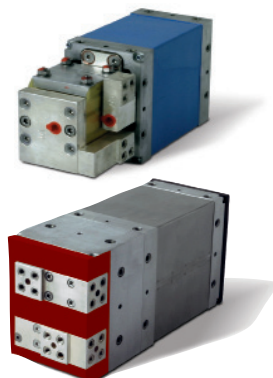
50 Hz



Referencia	kVA Sn (50%)	kA I _{2p} (100%)	V V _{ZSEC} (U20)	Dimensiones (mm)	Peso (Kg)
TSP-32H	32	4,0	5,6	106 x 150 x 250	18,0
TSP-36H	36	4,0	6,3	106 x 150 x 270	20,0
TSP-48J	48	5,4	6,3	125 x 160 x 270	26,5
TSP-54J	54	5,4	7,1	125 x 160 x 290	28,5
TSP-61J	61	5,4	8,0	125 x 160 x 310	32,0
TSP-76J	76	5,4	10,0	125 x 160 x 365	38,5
TSP-103J	103	5,4	13,5	125 x 160 x 460	51,5
TSP-65K	65	6,5	7,1	125 x 160 x 370	29,0
TSP-73K	73	6,5	8,0	125 x 160 x 385	32,5
TSP-92K	92	6,5	10,0	125 x 160 x 440	39,0

MF - Pinzas de Robot

1.000 Hz

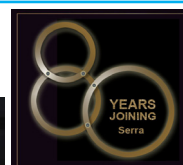


Referencia	kVA Sn (50%)	kA I _{2p} (100%)	V V _{ZSEC} (U20)	Dimensiones (mm)	Peso (Kg)
TSMF-56HE	56	5,0	6,3	106 x 150 x 290	16,0
TSMF-75HE	75	5,0	8,4	106 x 150 x 290	16,0
TSMF-100JE	100	6,5	9,2	125 x 160 x 305	22,0
TSMF-150JE	150	6,5	12,0	125 x 160 x 335	24,0
TSMF-250JE	250	6,5	16,5	125 x 160 x 375	30,0
TSMF-78KE	78	5,0	8,4	106 x 150 x 290	16,0
TSMF-111KE	111	6,5	9,3	125 x 160 x 305	22,0
TSMF-79KI	79	6,5	6,3	125 x 160 x 385	24,5
TSMF-120KI	120	6,5	10,0	125 x 160 x 385	26,0

 **SERRA**
SERRA SOLDADURA, S.A.

visit our new web site
www.serrasold.com

THE SPOT QUALITY
OUR REASON WHY



Quality Management
ISO 9001
www.dekraesd.com

