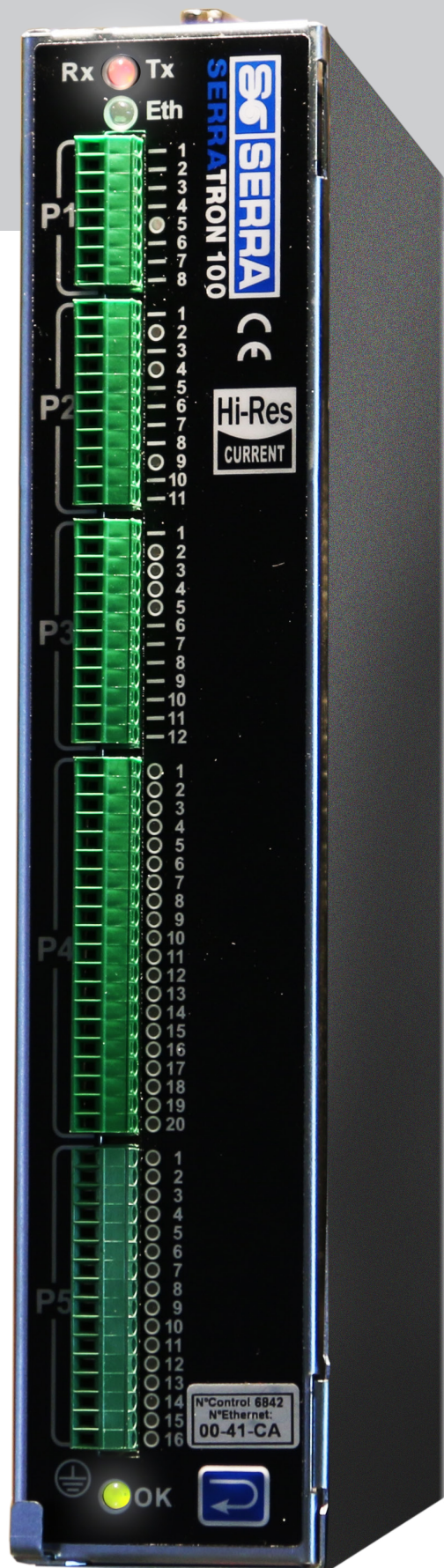


SERRATRON 100 C

Weld Controller for AC Resistance Welding

- ▶ Wide PLC functions
- ▶ Centralized programming
- ▶ Field Buses



SERRATRON 100C - Hi Res

- Version for currents lower than 50 kA and double resolution of measurement.

SERRATRON 100C - Standard

- Version for currents higher than 50 kA and standard resolution of measurement.

Applications

- Spot, projection and seam welding welding.
- Up to 4 weld guns controlled. Gun compensation through PES-20

Working Modes

- **MUX:** One thyristor group (AC single phase welding)
- **PLC:** All I/O free programmable.

127 welding programmes

- 3 welding time sequences + pulsations + up / down slope
- Operation in phase shifting, Current Monitoring or Constant Current Mode.
- Voltage changes compensation function.
- 1/2 wave welding function.

PLC functions

- 20 Inputs • 16 Outputs 0,7 A short circuit protected.
- Up to 260 I + 256 O using external expansion modules.
- HMI user interface with 7" touch screen. Messages and commands managed by PLC program.
- Ladder mode programming (up to 990 equations)
- Marks, latches, timers, counters, welding functions

Analogue Output for Proportional Valve

- 0 – 10 V / 4 – 20 mA / 0 – 20 mA

Electrode wear compensation

- Predefined curves (can be edited)
- Easy tuning, few parameters to be adjusted

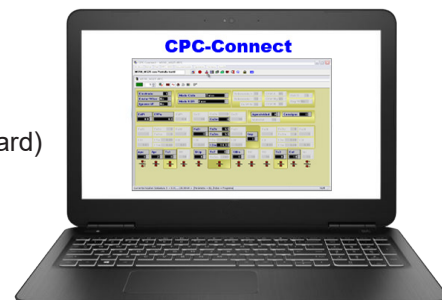
Tip dressing function

Central Programming

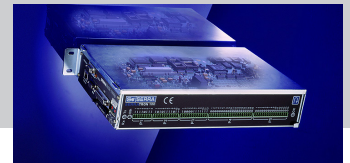
- Ethernet 10/100Base-T (Standard)
- Ethernet 10/100Base-FL
- TCP/IP

CPC-Connect® Software

Via Ethernet for lap-top



SERRATRON 100 C



PROGRAMMING MODES

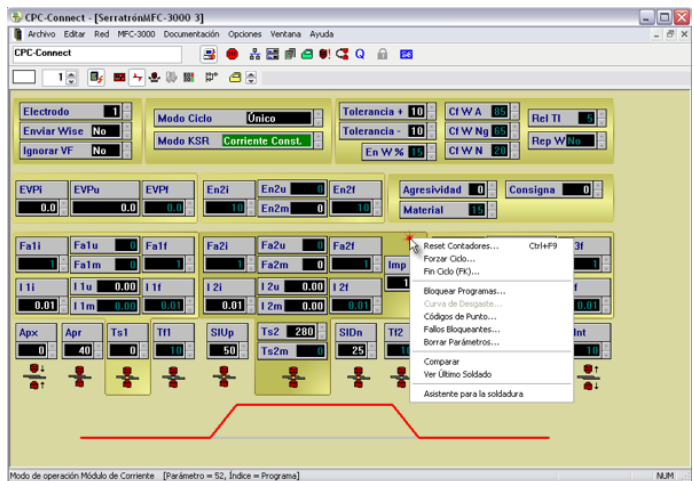


UPF-107

New HMI programming standard with 7" touch screen with several intuitive working menus for an easy parametrisation and monitoring of weld parameters.

TP-10

Portable Programming keyboard connected to welding timer to use as operator terminal.



Software - CPC-Connect

Programming software set for PC that provides a full, quick and intuitive dialog. Some of its wide functions are edition of parameters, I/O status, events log, register of welds, data safety and access protection by keywords.

ORDER CODES

CSP-100C - HR - PnetCu

Type of weld controller

CSP-100C SERRATRON 100C

Current scope

HR Hi-Res (Is < 50 kA)

ST Standard (Is > 50 kA)

Field Bus

0 Without Bus

IB InterBus-S

DNET DeviceNet

DP ProfiBus-DP

EthIP Ethernet-IP

PnetCu ProfiNet-Copper

PNetpFO ProfiNet-POF

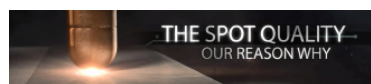
OPTIONS

Reference	Description
UPF-107	HMI programming unit with 7" touchscreen
CPC-Connect	Programming Software for lap-top
TP-10	Hand-held programming unit
MES-32 16i x 16o	External expansion module 16i + 16o
MES-32 24i x 8o	External expansion module 24i + 8o
MES-32 32i	External expansion module 32i
MES-32 32o	External expansion module 32o
MES-32 A	Expansion module 8i+8s+2 analog inputs
MUX-3	Multiplexer for 3 thyristor groups
PNet-Prog	Exchange/programming Parameters via ProfiNet



Control cabinet

Weld control cabinet integrating CSP-100c weld timer, thyristor group and fluids panel.



ISO 14001

BUREAU VERITAS
Certification

